

# Raccords express

## Claw couplings

## Drehverschlusskupplungen

### Champs d'application : air comprimé, eau froide

#### Caractéristiques techniques

- corps du raccord en laiton matricé
- joints caoutchouc noir
- norme NF E29-573  
(distance entre griffes : 41 mm)
- pression maximale d'exercice : 10 bar
- température de travail :  $-10^{\circ} \div 80^{\circ}\text{C}$

### Areas of application : compressed air, cold water

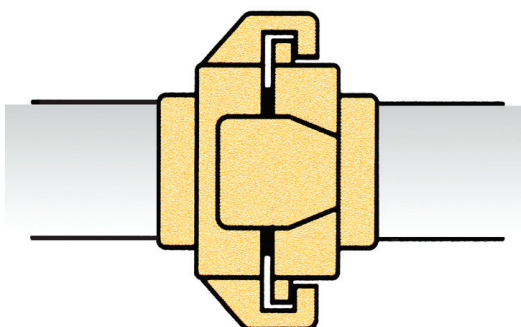
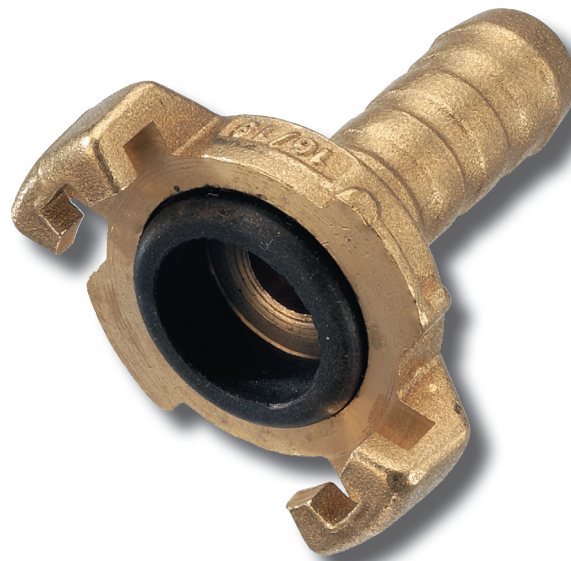
#### Technical features

- stamped brass body
- black rubber gasket
- according to NF E29-573  
(claws gap : 41 mm)
- maximum working pressure : 10 bar
- working temperature :  $-10^{\circ} \div 80^{\circ}\text{C}$

### Anwendungsbereiche : Druckluft, Kaltwasser

#### Technische Daten

- Körper aus gesenkschmiedete Messing
- Dichtung aus Gummi, schwarz
- entsprechend NF E29-573  
(Nockenweite : 41 mm)
- maximaler Betriebsdruck : 10 bar
- Betriebstemperatur :  $-10^{\circ} \div 80^{\circ}\text{C}$

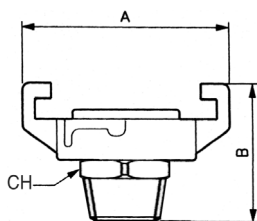


# Raccords Fittings Verschraubungen

## DROIT MÂLE, GAZ BSP

MALE CLAW COUPLING  
AUSSENGEWINDE-KUPPLUNG

### 5480

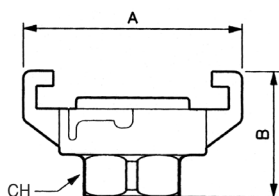


TYPE	FILETAGE	A	B	CH
<b>CODE</b>				
5480 13 00	1/4	57	40	14
5480 17 00	3/8	57	40	19
5480 21 00	1/2	57	41	24
5480 27 00	3/4	57	41	31
5480 34 00	1"	57	44	34
5480 42 00	1 1/4"	57	46	44

## DROIT FEMELLE, GAZ BSP

FEMELLE CLAW COUPLING  
INNENGEWINDE-KUPPLUNG

### 5483

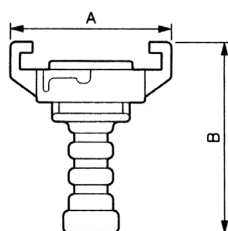


TYPE	FILETAGE	A	B	CH
<b>CODE</b>				
5483 13 00	1/4	57	32	17
5483 17 00	3/8	57	32	21
5483 21 00	1/2	57	32	26
5483 27 00	3/4	57	35	33
5483 34 00	1"	57	38	38
5483 42 00	1 1/4"	57	43	46

## RACCORD EXPRESS CANNELE

HOSE CLAW COUPLING  
SCHLAUCHKUPPLUNG

### 5485

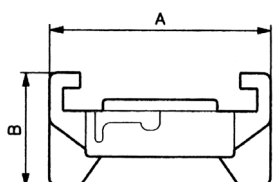


TYPE	Ø INT. DU TUYAU	A	B
<b>CODE</b>			
5485 06 00	6	57	69
5485 07 00	7	57	69
5485 08 00	8	57	69
5485 09 00	9	57	69
5485 11 00	11	57	69
5485 13 00	13	57	69
5485 16 00	16	57	69
5485 19 00	19	57	69
5485 22 00	22	57	69
5485 25 00	25	57	69
5485 30 00	30	57	69

## BOUCHON EXPRESS

BLANK END  
VERSCHLUSSKUPPLUNG

### 5487

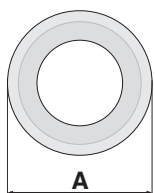


TYPE	A	B
<b>CODE</b>		
5487 41 00	57	30

## DIVERS JOINTS

VARIOUS SEALS  
DICHTUNGEN

# 5488



TYPE	matière	Qt/sachet	A
<b>CODE</b>			
5488 01 41	joint caoutchouc noir	10	34
5488 02 41	joint néoprène rouge	10	34
5488 03 41	joint viton	à l'unité	34

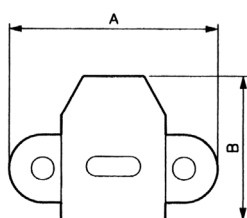
## COLLIERS DE SERRAGE À GRIFFES

CLAW COLLARS  
SCHLAUCHBRIDEN

# 5489



acier galvanisé



TYPE	Ø	A	B
<b>CODE</b>			
5489 15 00	14 - 16	43	33
5489 17 00	16 - 18	44	33
5489 20 00	19 - 21	48	33
5489 23 00	22 - 24	50	33
5489 26 00	25 - 27	56	33
5489 29 00	28 - 30	58	36
5489 32 00	31 - 33	62	36
5489 36 00	34 - 37	69	36
5489 38 00	37 - 39	76	48
5489 42 00	41 - 43	78	48

